

EXCEL® Webbing components

Applications

When using a web sling, make sure to combine it with fittings suitable for use with textile slings.

Range

Van Beest offers various types of hooks and connectors designed to suit web slings.

Design

Webbing items supplied by Van Beest are made from grade 8 alloy steel.

These components are generally marked with:

- | | |
|------------------------------------|-----------------------|
| - manufacturer's symbol | ■ EXCEL |
| - chain diameter in mm and/or inch | ■ e.g. 13 and/or 1/2" |
| - traceability code | ■ e.g. HA |
| - steel grade | ■ 8 |
| - item code | ■ e.g. CST |
| - origin | ■ FRANCE |

Finish

EXCEL® webbing hooks and connectors are powder coated in yellow or red.

Certification

Specific details of certificate availability can be found on each product page.

Please verify your certification requirements with Van Beest at time of order.

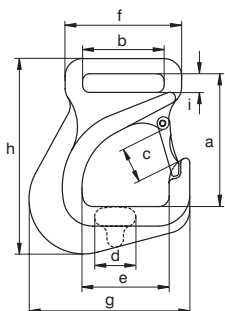
Instructions for use

All webbing products should be inspected before use to ensure that:

- all markings are legible;
- items with the correct WLL have been selected. For further details we refer to the EN818 standard for chain slings;
- all items of the sling are all of the same steel grade;
- for the web slings we refer to the user manual supplied by the manufacturer of these slings;
- items are not distorted or unduly worn;
- all items are free from nicks, gouges, cracks and corrosion;
- items may not be heat treated as this may affect their WLL;
- never modify, repair or reshape a an item by machining, welding, heating or bending as this may affect the WLL.

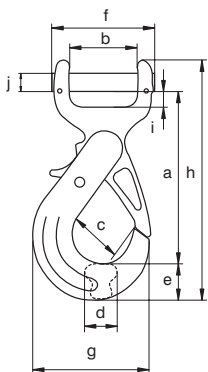
It is required that the products are regularly inspected in accordance with the safety standards given in the country of use. This is required because the products in use may be affected by wear, misuse, overloading, etc. which may lead to deformation and alteration of the material structure.

Inspection by a competent person should take place at least every six months and even more frequently when the components are used in severe operating conditions.

EXCEL®**EXCEL® Flat web sling hook, grade 8****CST**

- **Material** : alloy steel, grade 8, quenched and tempered
- **Safety factor** : MBL equals 4 x WLL
- **Finish** : painted yellow
- **Certification** : 2.1 2.2 3.1 MPI^b

working load limit	length	inside width eye	width opening	thickness	width inside	width outside	width outside	length outside	width inside	weight each
t	a mm	b mm	c mm	d mm	e mm	f mm	g mm	h mm	i mm	kg
3	132	79	34	40	75	113	148	199	25	2.63

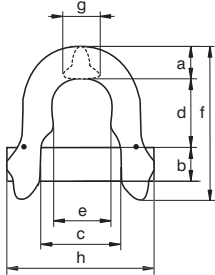
EXCEL®**EXCEL® Flat web sling self locking hook, grade 8****XLS**

- **Material** : alloy steel, grade 8, quenched and tempered
- **Safety factor** : MBL equals 4 x WLL
- **Finish** : painted yellow
- **Certification** : 2.1 2.2 3.1 MPI^b

working load limit	length	width	width opening	thickness	width	width outside	width outside	length outside	length inside	diameter pin	weight each
t	a mm	b mm	c mm	d mm	e mm	f mm	g mm	h mm	i mm	j mm	kg
2	161	62	47	32	35	94	111	222	18	16	2.11



COS



EXCEL® Round web sling connector, grade 8

- **Material** : alloy steel, grade 8, quenched and tempered
- **Safety factor** : MBL equals 4 x WLL
- **Finish** : painted yellow
- **Certification** : 2.1 2.2 3.1 MPI^b

working load limit	width	diameter pin	width	length inside	width inside	length outside	thickness	width outside	weight each
t	a mm	b mm	c mm	d mm	e mm	f mm	g mm	h mm	kg
2	14	9	33	35	23	66	15	59	0.18
3.2	18	13	44	45	30	86	20	75	0.37
5.4	22	16	57	59	38	107	25	94	0.72
8.2	28	20	70	72	48	133	31	117	1.35

Example combinations with COS:



MS + CO + COS



COS + XLC

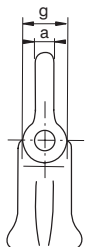
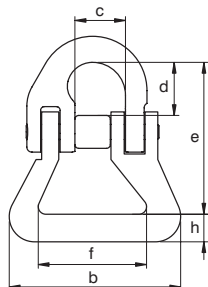


COS + CSC

EXCEL®



MJS

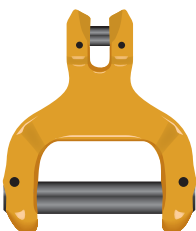


EXCEL® Round web sling connecting link, grade 8

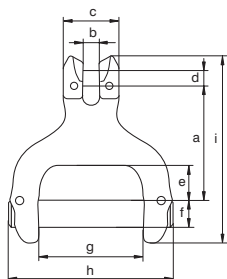
- **Material** : alloy steel, grade 8, quenched and tempered
- **Safety factor** : MBL equals 4 x WLL
- **Finish** : painted yellow (J) or red (R)
- **Certification** : 2.1 2.2 3.1

for chain diameter		working load limit	diameter	width outside	width inside	length inside	length outside	width inside	diameter eye	thickness	weight each
mm	inch	t	a	b	c	d	e	f	g	h	kg
7-8	1/4 - 5/16	2	9	66	19	21	61	40	14	14	0.31
10	3/8	3.2	12	76	25	24	74	45	19	15	0.51
13	1/2	5.4	16	87	30	30	91	51	24	19	1.01

EXCEL®



COC



EXCEL® Flat web sling to chain connector, grade 8

- **Material** : alloy steel, grade 8, quenched and tempered
- **Safety factor** : MBL equals 4 x WLL
- **Finish** : painted yellow (J)
- **Certification** : 2.1 2.2 3.1 MPI b

for chain diameter		working load limit	length	width	width outside	diameter pin	length inside	diameter pin	width inside	width outside	length outside	width inside	width outside
mm	inch	t	a	b	c	d	e	f	g	h	i	j	kg
7-8	1/4 - 5/16	2	65	9	32	9	20	16	60	94	107	32	0.68